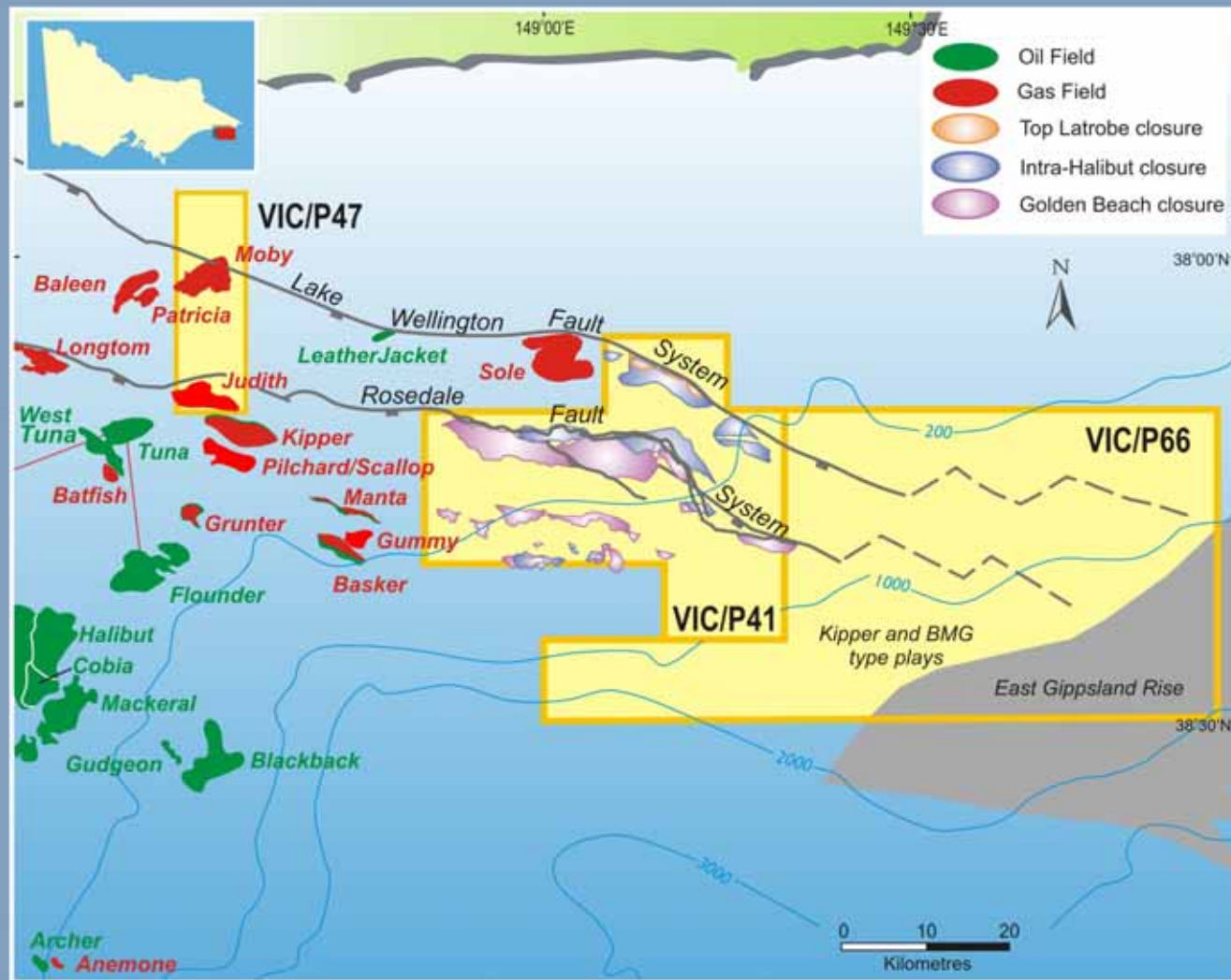


# VIC/P66: GIPPSLAND BASIN EXTENSION PLAY

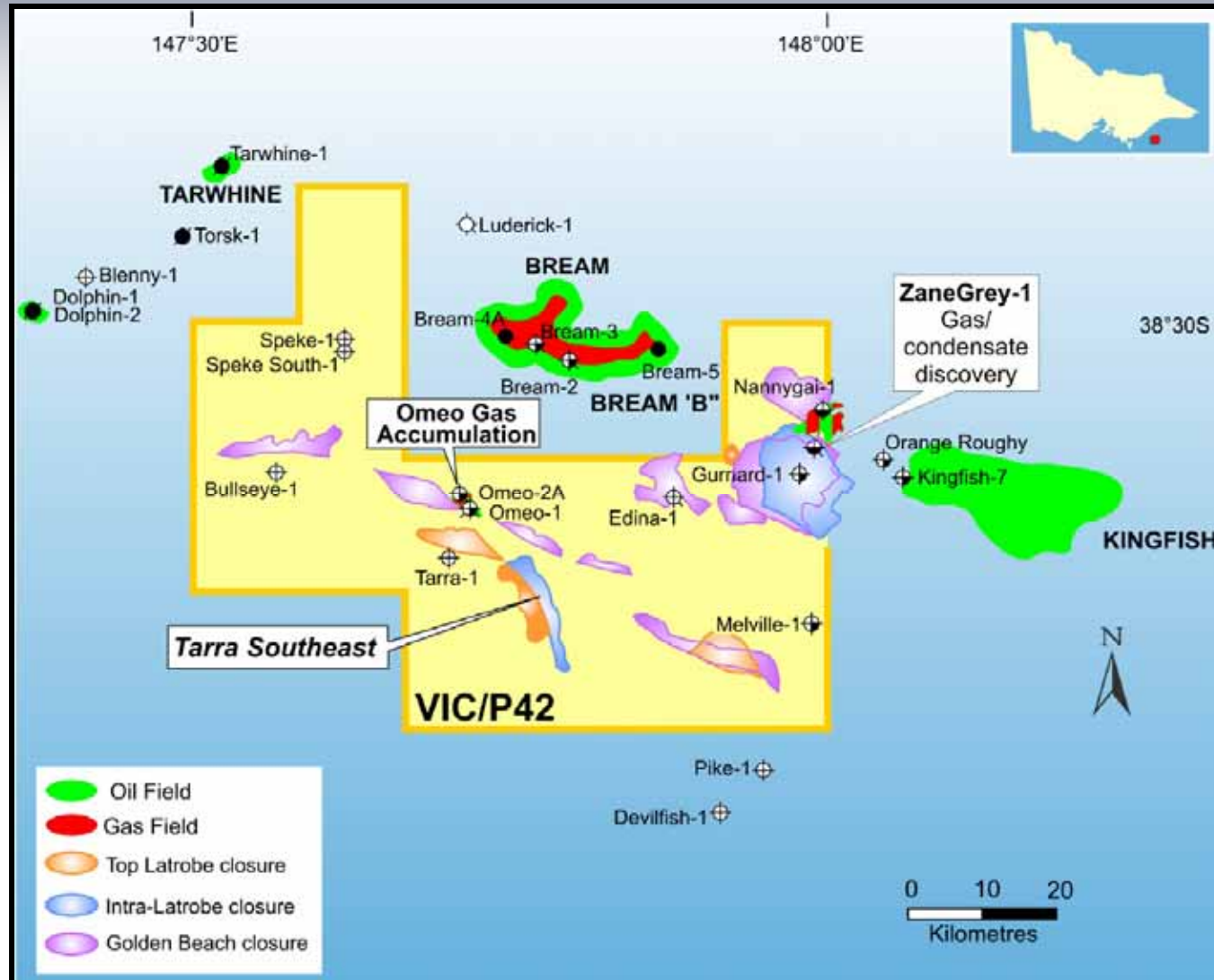


East Gippsland Play Map

## Vic/P66

- **BAS – 60% & operator**
- **No wells & sparse seismic control**
- **Possible extensions of Vic/P41 plays and leads (e.g. Lead A)**
- **Year 1 of permit, building data base**

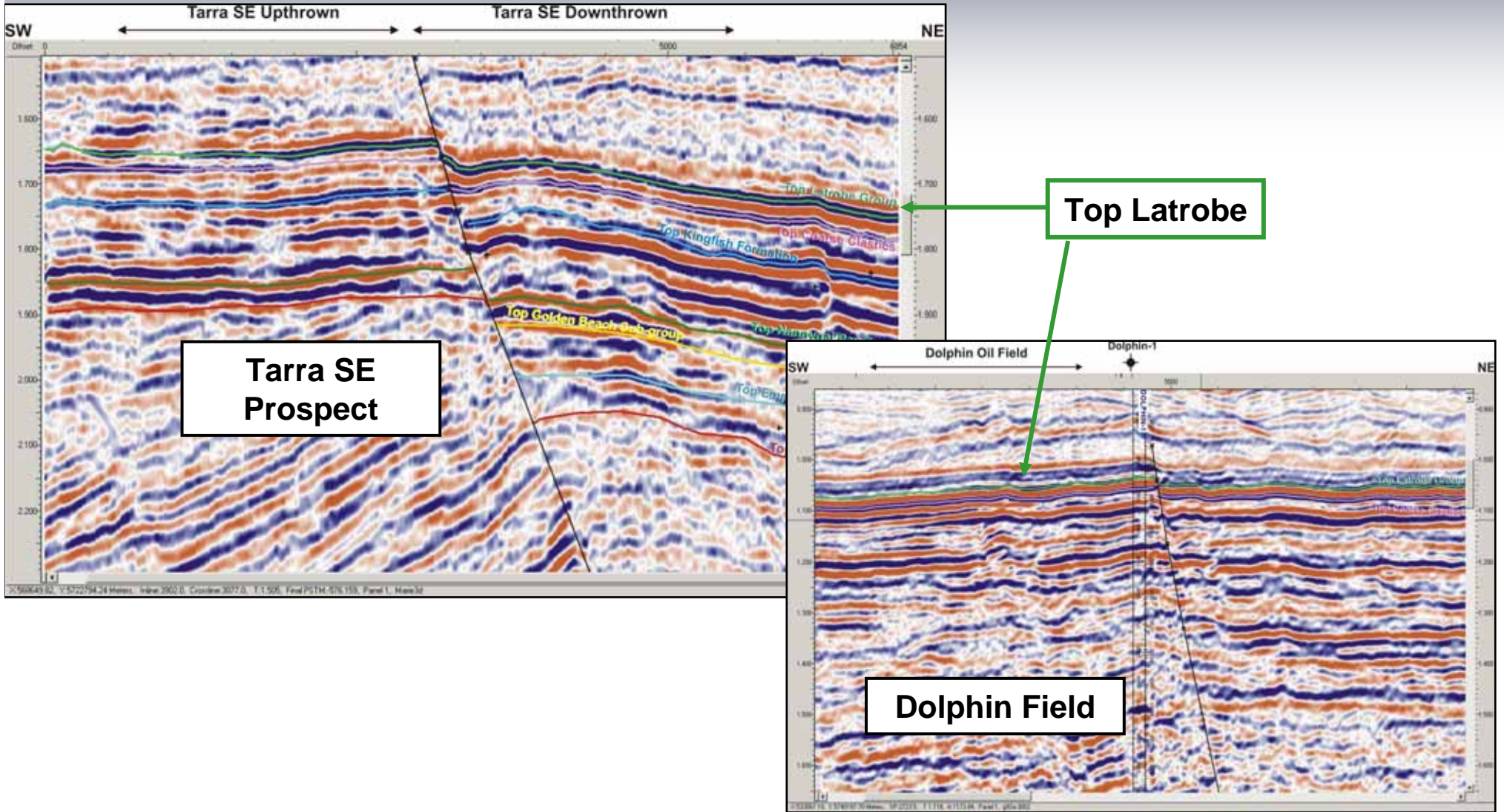
# VIC/P42: PROSPECTS & LEADS



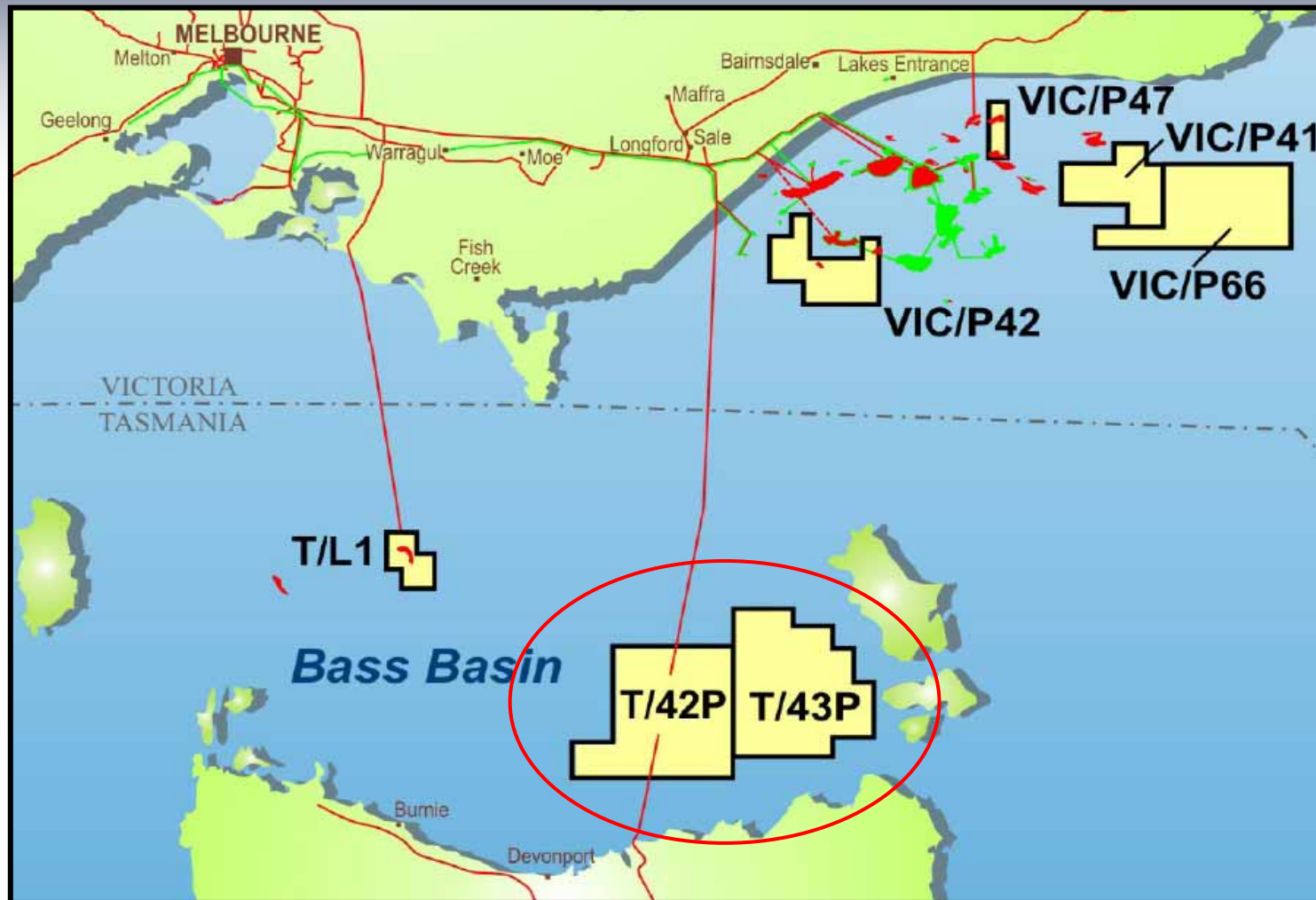
- *Renewal complete - BAS 100% and operator*
- *Zane Grey and Omeo discoveries*
- *Renewal area fully covered by 3D seismic*
- *Seismic data sets to be reprocessed*



# VIC/P42: TARRA SE & DOLPHIN FIELD ANALOGUE

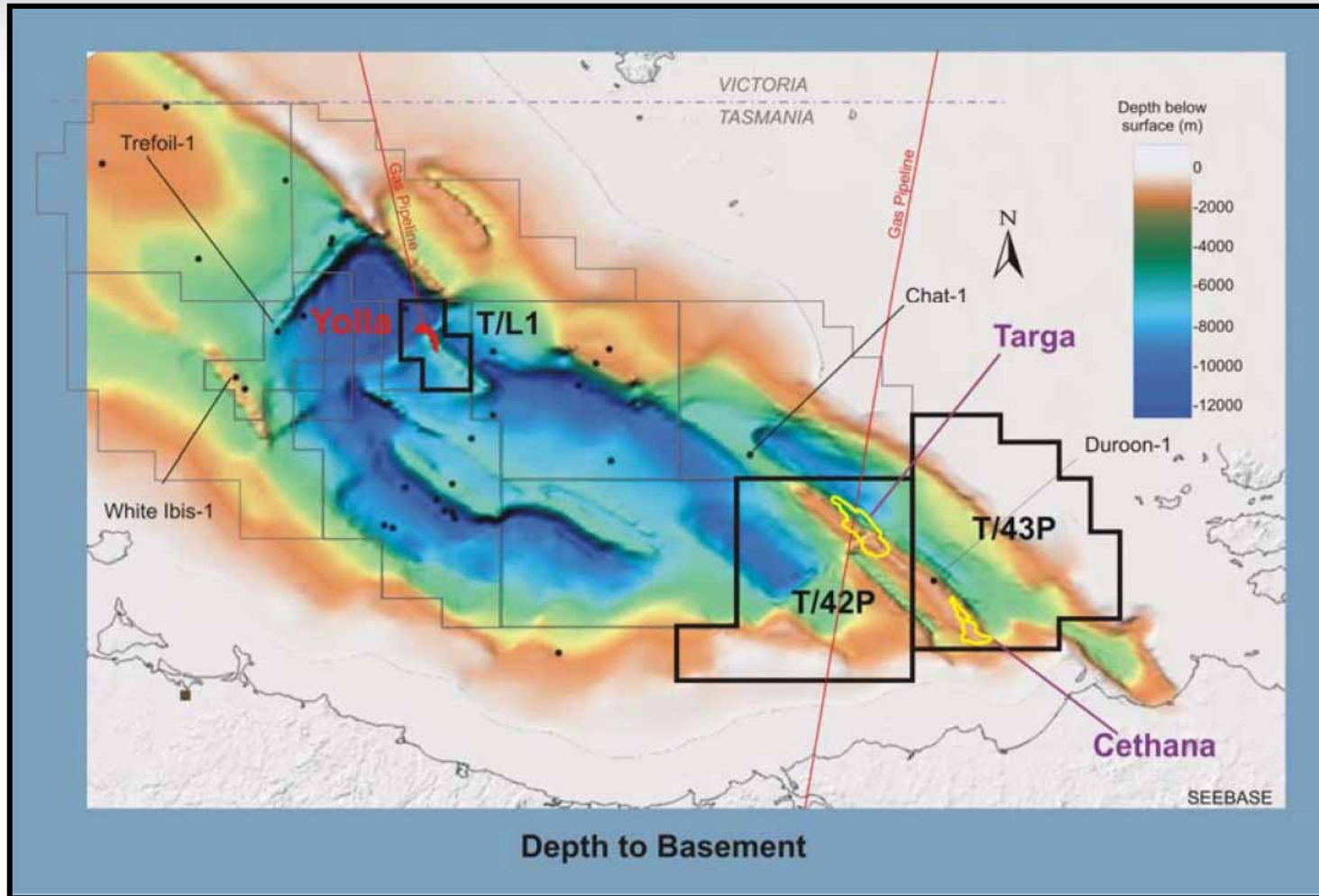


# BASS BASIN ACREAGE – BAS 100% and operator



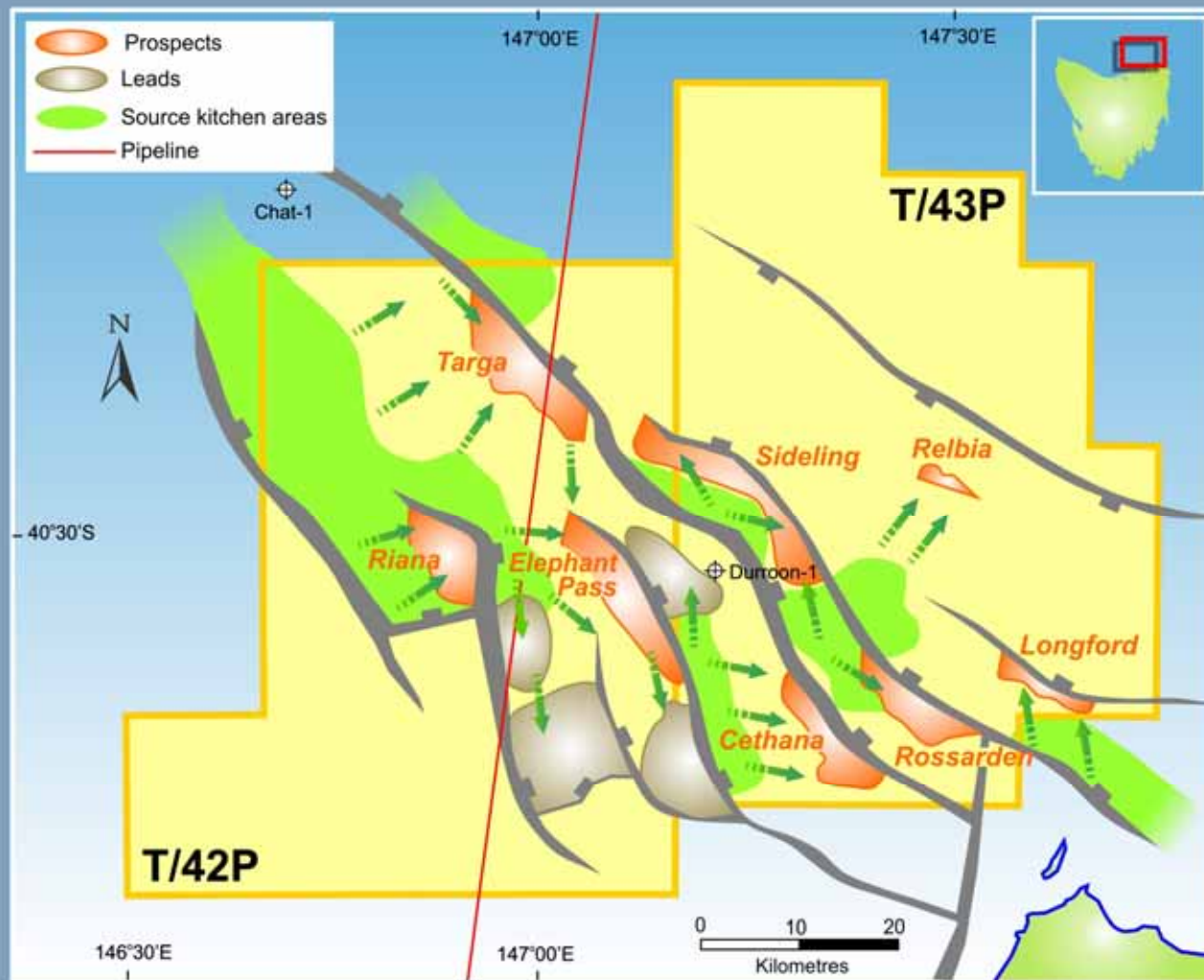
- *T/42P & T/43P - total 6,120 sq km capturing much of the Durroon Sub basin play*
- *Under explored area with one well, limited 2D seismic.*
- *New 2D seismic acquired and older vintage data reprocessed in 2008.*
- *Favourably located - infra structure and growth markets, in water depth < 100m*

# BASS BASIN ACREAGE – REGIONAL SETTING



- *Major NW/SE structure evident on depth to basement map*
- *Bark, Anderson & Boobyalla Troughs untested Durroon SB source “kitchens”*
- *Presence of reservoirs and access to hydrocarbon charge probable based on studies*

# BASS BASIN ACREAGE – BAS 100% and operator



T/42P & T/43P Prospects & Leads

## Summary of recent results:

- petroleum 'kitchen' areas have the potential to have generated large volumes of oil and gas
- an inventory of large prospects defined on high quality data with a number of play types
- short and direct migration pathways from the kitchen areas to prospects
- favourable interpreted timing of generation and trapping
- prospect integrity maintained since migration, preserving any accumulation
- the two existing wells did not test valid traps and were not located on migration pathways

## Clear Exploration Focus on Southeast Australia

**BASS STRAIT**



*Oil for Australians*

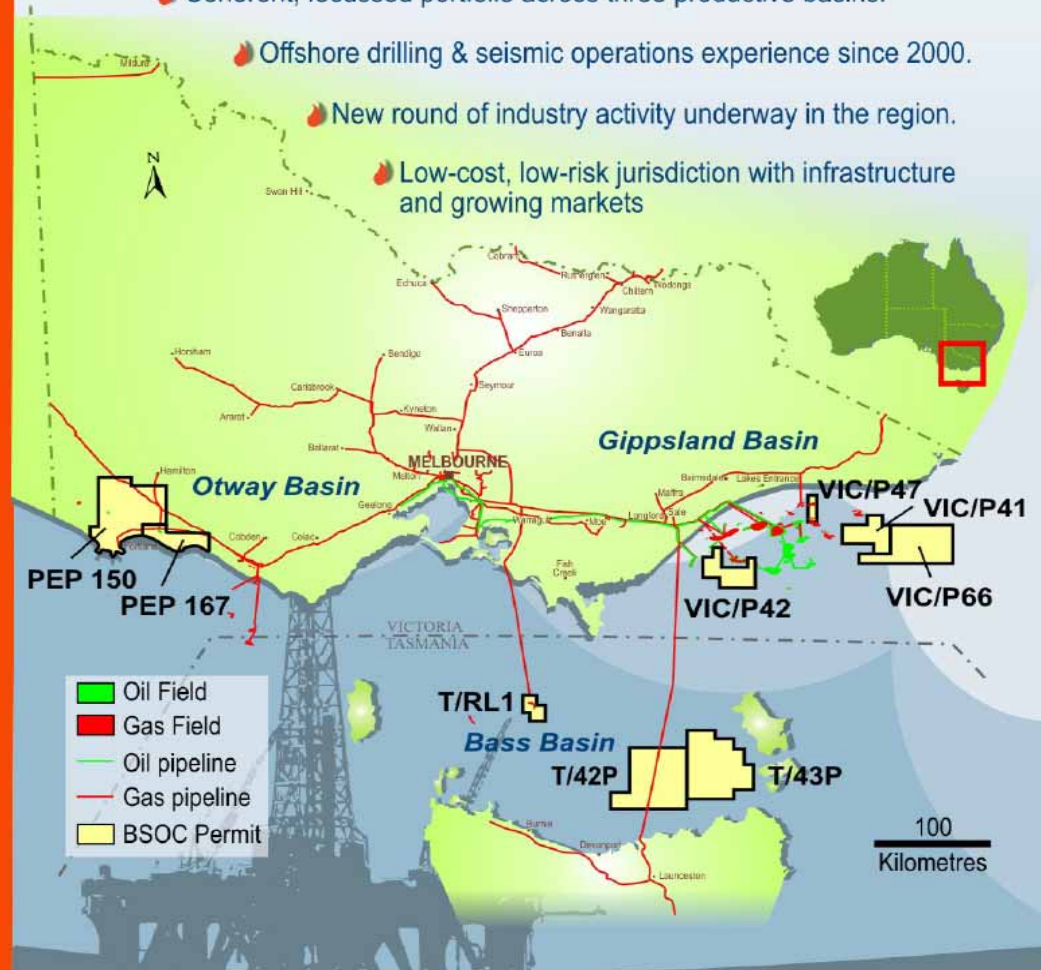
🔥 Strong permit position;  
excellent leverage to high-impact discovery potential.

🔥 Coherent, focussed portfolio across three productive basins.

🔥 Offshore drilling & seismic operations experience since 2000.

🔥 New round of industry activity underway in the region.

🔥 Low-cost, low-risk jurisdiction with infrastructure  
and growing markets



**BASS STRAIT OIL COMPANY LTD**

Phone: +61 3 9927 3000 Email: [admin@bassoil.com.au](mailto:admin@bassoil.com.au) Web: [www.bassoil.com.au](http://www.bassoil.com.au)



# DISCLAIMER

*This presentation has been prepared by Bass Strait Oil Company Ltd (“BAS” or the “Company”), with the purpose of providing general information about the Company. It should not be considered as an offer or invitation to subscribe for or purchase any securities in the Company, or as an inducement to make an offer or invitation with respect to those securities.*

*The presentation contains certain statements which may constitute “forward-looking statements”. Such statements are only predictions and involve inherent risks and uncertainties. Actual results and performance are likely to differ materially from those expressed or implied in any forward-looking statements.*

*To the maximum extent permitted by applicable laws, BAS and its directors, agents, officers or employees make no representation and can give no assurance, guarantee or warranty, express or implied, as to, and take no responsibility and assume no liability for, the authenticity, validity, accuracy, suitability or completeness of, or any errors in or omission from, any information, statement or opinion contained in this presentation.*

*This presentation does not purport to be all inclusive or to contain all information which its recipients may require in order to make an informed assessment of the Company’s prospects. It should not be relied upon as a complete and accurate representation of any matters that a potential investor should consider in evaluating BAS.*

*The Company accepts no responsibility to update any person regarding the information contained in this presentation.*